



Security Engineered Machinery Co., Inc

OPERATIONAL & MAINTENANCE MANUAL

SEM Model P2 Pro Degausser



As of January 1, 2008

Security Engineered Machinery Co., Inc

NATIONWIDE SERVICE

Phone Toll Free 1(800)225-9293

Email: **Service@SEMSHRED.COM**

Fax: 1(508)366-1671

Website: **WWW.SEMSHRED.com**

Thank you for purchasing the SEM Mag EraSURE™ Professional. When used correctly, the SEM Mag EraSURE™ Professional provides a high-confidence and safe means to thoroughly erase sensitive data from magnetic storage products and media, such as Hard Disk Drives and Magnetic Tapes. Please take the time to read this manual before attempting to use the SEM Mag EraSURE™ unit for the first time, and keep this manual in a safe place where it will be readily accessible for use as an operating reference.



CAUTION: Improper use of the SEM Mag EraSURE Professional can result in serious harm or injury! The manufacturer will not be responsible for any injury or malfunctions resulting from the misuse of this product, other than as set forth in this manual.

1 Overview of the SEM Mag EraSURE™ Professional

The SEM Mag EraSURE™ Professional employs a motor-driven tray that cycles the product/media to be erased through a high-intensity magnetic field. Note that the SEM Mag EraSURE™ will not only erase the data stored on an HDD but will also render the HDD inoperable.



HDD's that have been erased by the SEM Mag EraSURE™ Professional cannot be reused or repaired by conventional means. Pre-formatted tape media (LTO and some 3480/3490 cartridges) will also be unusable after being erased in this unit.

The SEM Mag EraSURE™ Professional provides a quick and reliable means to erase data on the following Hard Disk Drives (HDDs):

- 3.5-inch "Half-Height" (1") HDDs
- 3.5-inch "Full-Height" (1.6") HDDs
- 2.5-inch HDDs
- 1.8-inch HDD & PC-Card HDDs

In addition, the SEM Mag EraSURE™ Professional can be used to erase the following types of Tape media:

- 3480/3490 Tape Cartridges
- DLT Tapes
- LTO Tapes
- ¼" QIC Tape
- DAT Tape
- 8mm Helical Tape
- TRAVAN NS Tape
- AIT Tape

Operation of the SEM Mag EraSURE™ Professional involves:

- Opening the *access door*
- Placing the appropriate device adapters in the *device tray*
- Loading the product/media to be erased
- Installing the *Guide Block*
- Closing the access door
- Pressing the *START* button on the *control panel* to initiate the erasure cycle

During the erase cycle the SEM Mag EraSURE's motor moves the device loaded in the device tray into the high-strength magnetic field created by the internal magnet assembly, and then back out to the device loading/unloading position. The erase cycle takes approximately 60 seconds. The magnetic field in the SEM Mag EraSURE™ Professional is well contained, and operation of the unit poses no risk to credit cards or other magnetically encoded materials, however, *people with pacemakers or other devices that are sensitive to magnetic fields should avoid using the SEM Mag EraSURE™ Professional.*

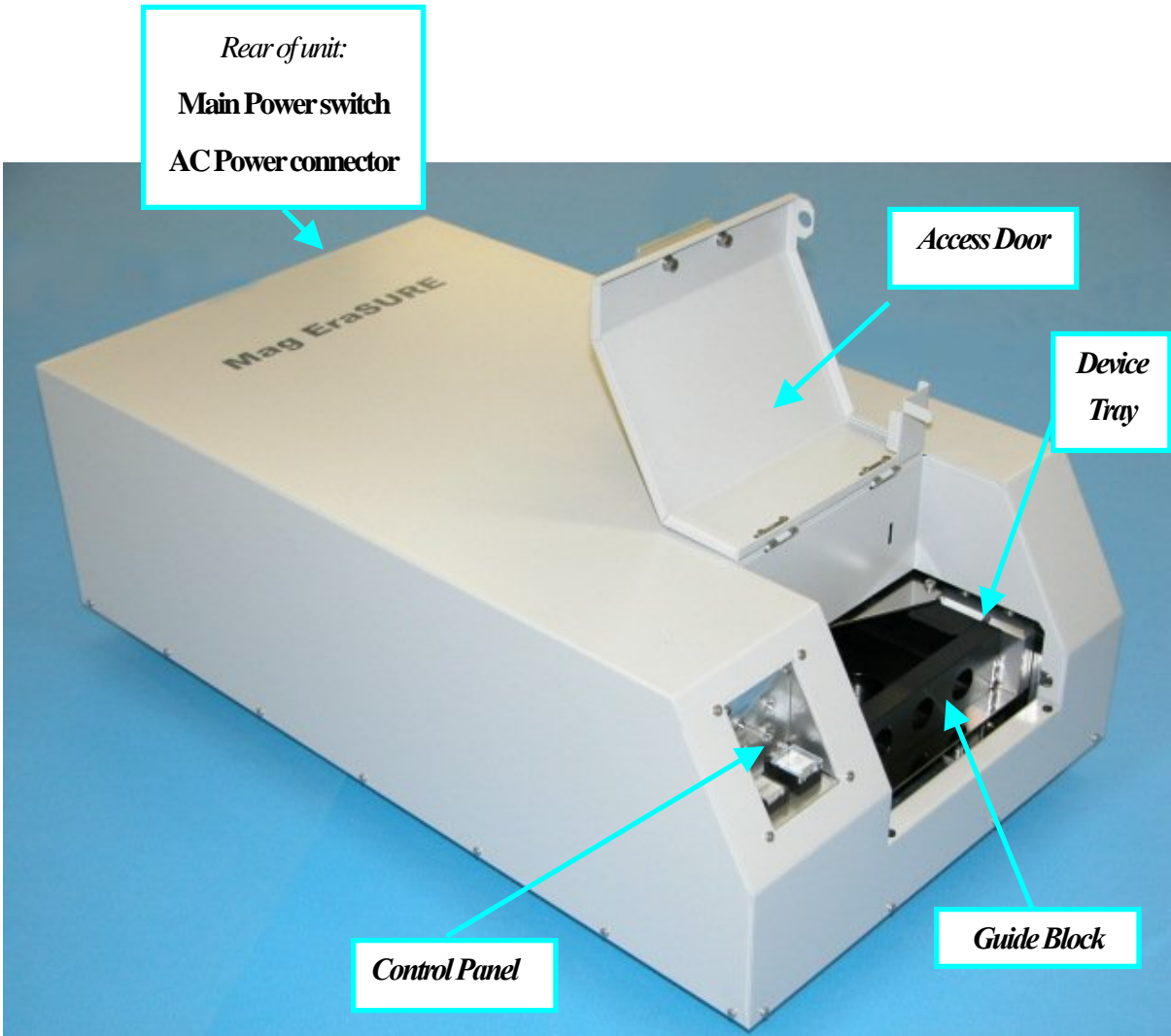


FIGURE 1: The SEM Mag EraSURE™ Professional

2 SEM MAG EraSURE™ PROFESSIONAL OPERATION

2-1 Setting Up the SEM Mag EraSURE™ Professional



CAUTION: The SEM Mag EraSURE™ product is very heavy (approximately 48 lbs.).

At least two persons are needed to install or transport the unit. Also, to avoid the possibility of damage, do not grasp the access door when transporting the unit.

Locate the SEM Mag EraSURE™ Professional on a level surface in a secure location where it will not be subjected to vibration or impact. Avoid using or storing the unit in the following:

- (1) Direct sunlight or other high-temperature locations
- (2) Extremely cold or humid locations, or locations where it could come into direct contact with water or other liquids
- (3) Locations where there is a significant amount of dust, dirt or soot.
- (4) Locations where metal filings or metal particles are present. Metal particles can stick to the unit and are difficult to remove, and will eventually cause the unit to fail.

NOTE: Moving the unit from a cold outdoor environment into a heated room can result in the formation of condensation inside the chassis. In this event, allow the unit to sit and adjust to the new indoor temperature for at least an hour before using it.

2-2 Precautions

When using the SEM Mag EraSURE™ Professional, always observe these important safety precautions:

- (1) Do not use SEM Mag EraSURE™ Professional for any purpose other than erasing magnetic data from an HDD or a Tape. Do not attempt to erase any devices not listed in Table 1 of this manual.
- (2) The strength of the residual magnetic field outside the SEM Mag EraSURE™ Professional is very low and poses no direct health risk, however ***people with pacemakers or other devices that are sensitive to magnetic fields should not use this product.***
- (3) Do not place coffee, other beverages, or containers of liquid anywhere near the unit. The SEM Mag EraSURE™ unit could malfunction or cause a serious injury if liquid gets into the chassis.
- (4) Do not place objects on the cover or the access door of the SEM Mag EraSURE™ unit.
- (5) Store the attachments carefully when they are not in use. Do not drop the *Guide Block* or subject it to a strong impact. If it is damaged or deformed, the unit will no longer be operational.
- (5) Observe the appropriate precautions when handling the power cord. Only use the power cable that is supplied with the unit, and ensure that the Power switch is OFF before connecting the power cable. If the unit stops working properly, unplug the power cord.
- (6) Do not operate the SEM Mag EraSURE™ if it is damaged or defective. If the SEM Mag EraSURE™ Professional becomes defective, return it to the place of purchase for repairs.

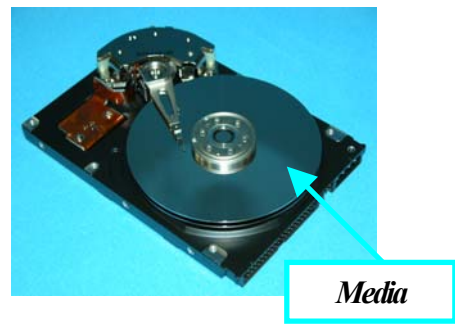
2-3 Using the SEM Mag EraSURE™ Professional

- (1) Make sure the *Power Switch* on the back of the SEM Mag EraSURE™ Professional is turned OFF, then connect the power cord.
- (2) Turn on the Power switch. The *POWER* light on the control panel will light. Verify that the *ALARM* indicator is off.

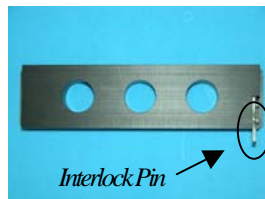


- (3) Open the Access door. (Don't push down on the access door when inserting or removing an HDD from the unit.)
- (4) Install the appropriate device adapter(s) and then insert the device to be erased. Refer to the section listed in Table 1 for the detailed installation sequence. *Please follow the instructions carefully – using the wrong adapter, or failing to install the device correctly, can damage the SEM Mag EraSURE™ unit.*
- (5) If the device to be erased is a 3.5" HDD, make sure to place the HDD in the slot with the HDD's cover facing up. (PCBA facing down) This is will ensure that 100% of the media will be encompassed by the magnetic field during the erasure cycle. *Failure to orient the HDD properly may cause the device to not be completely erased!*

NOTE: Typically, HDD devices are constructed with the media and spindle (disk stack) on one end and the actuator (head stack) at the other. For example, the following pictures show the exterior and corresponding interior views of a typical 3.5" HDD:



- (6) After the device has been set in the *device tray*, push firmly on the *Device Retaining Block* to set the block's *interlock pin* securely in the corresponding hole in the device tray:



NOTE: *If the interlock pin is not inserted correctly the Ready indicator will not come on when the access door is closed!*

(7) Close the access door. The *READY* light should illuminate:



(8) Press the *START Switch* and hold it down until the *START* light is illuminated, which indicates that the erasure process has started:



(9) When the *START* indicator goes off the erasure process is complete.

(10) Open the *access door* and follow the sequence in Section 3 to remove the erased device from the unit.

(11) Repeat steps 4 – 10 for each device to be erased

(12) Turn off the *Main Power Switch* on the rear panel when finished.

NOTE: If the *ALARM* light goes on during the erasure process, do the following:



- (1) Lift up the protective cover on the *ALARM RESET Switch* and press the *RESET Switch* until *ALARM* light goes off.
- (2) After the *ALARM* light goes off, press the *START Switch* briefly to restore the system

2-4 Recovery in the event of power loss

During operation, if the *Main Power Switch* is inadvertently turned off or if the power cord is accidentally unplugged, do the following:

- (1) Restore Power to the unit. (Be sure to turn the Main Power switch on the rear panel to “OFF” before reconnecting the power cord.)
- (2) Verify that the *POWER* indicator on the Control Panel is illuminated. Verify that the *ALARM* light is off.
- (3) Press the *START Switch* on the operation panel until the *START* indicator on the operation panel lights. The *READY* lamp should come on when the device tray returns to the load/unload position, indicating that the unit is ready to resume normal operation. Repeat the erase process to make sure that the device is completely erased.

2-5 Handling Erased HDDs

It is recommended that a label be attached to the erased HDD to indicate that the device has been erased by the SEM Mag EraSURE™ unit, to prevent others from inadvertently trying to use the device:



FIGURE 2

After being erased by the SEM Mag EraSURE Professional, HDDs and pre-formatted tape media (LTO and some 3480/3490 cartridges) cannot be reused or repaired. Please dispose of the HDD in accordance with local environmental standards

2-6 Maintenance



- (1) **Do not remove any covers or plates, or attempt to disassemble or modify this product in any way.** There are no user-serviceable parts in the SEM Mag EraSURE™ unit and there is a high risk of personal injury if the internal components are handled improperly. **Removing the cover or disassembling this product will void your warranty!**
- (2) A clean soft, dry cloth may be used to wipe down the outside of the SEM Mag EraSURE™ and the power cable. (Be sure to unplug the power cable prior to attempting to clean it!) Do not use harsh chemicals like benzene or thinners to clean the equipment.
- (3) The SEM Mag EraSURE™ Professional contains strong magnets. Take appropriate precautions when disposing of the unit.

2-7 Device Adapters

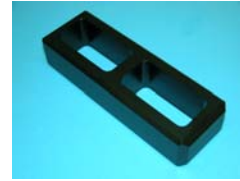
The adapters shown in *Figure 2* are designed to support a variety of HDDs and Tape Media. *Table 1* lists the adapters required for each device type supported by the SEM Mag EraSURE™ Professional. For details on how to use the adapters, refer to the Section called out for the associated device in *Table 1*.

NOTE: Devices not listed in Table 1 are NOT SUPPORTED by the SEM Mag EraSURE™ Professional. **Do not attempt to use the SEM Mag EraSURE™ unit with other types of devices** - doing so might damage the unit, and will void the Manufacturer's Warranty.

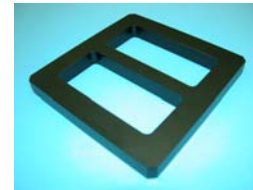
① **Base Attachment**
(ZB100-0510-X0030)



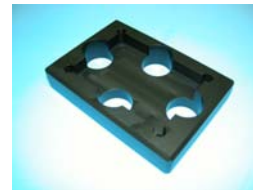
② **Side Guide**
(ZB100-0510-X0032)



③ **Base Frame**
(ZB100-0510-X0031)



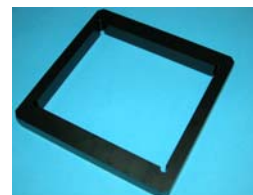
④ **Small HDD Attachment**
(ZB100-0510-X0033)



⑤ **HDD Spacer**
(ZB100-0510-X0034)



⑥ **Tape Attachment**
(ZB100-0510-X0050)



⑦ **Tape Spacer**
(ZB100-0510-X0049)



FIGURE 2: Device Adapters

DEVICE	①Base Attachment	②Side Guide	③Base Frame	④Small HDD Attachment	⑤HDD Spacer	⑥Tape Attachment	⑦Tape Spacer	SECTION
3.5" Half-Height (1") HDD <i>NORMAL Process</i>	•							3.1
3.5" Half-Height (1") HDD <i>HIGH SECURITY Process</i>		•	•					3.2
3.5" Full-Height (1.6") HDD		•						3.3
2.5" (9.5 mm H) HDD	•			•	•			3.4
2.5" (12.5 mm H) HDD	•			•				3.5
1.8" HDD	•			•				3.6
1.8" HDD (PC Card Mounted)	•			•				3.7
3480 Tape Cartridge			•			•		3.8
DLT Tape			•			•		3.9
LTO Tape			•			•		3.10
¼" QIC Tape	•						•	3.11
DAT Tape	•			•				3.12
8mm Tape			•			•	•	3.13
TRAVAN NS Tape			•			•	•	3.14
AIT Tape			•			•	•	3.15

TABLE 1: Device Adapter Applications

2 PROCEDURES FOR MOUNTING AND REMOVING DEVICES

3-1 3.5-inch Half-Height (1-inch) HDD (Normal Process)

- (1) Open the access door and set the *Base Attachment* in the device tray. Place the HDD in the slot with the HDD's cover facing up. (PCBA facing down)

Be careful mounting the HDD - data may not be completely erased if it is not oriented correctly:



- (2) Install the *Guide Block*:

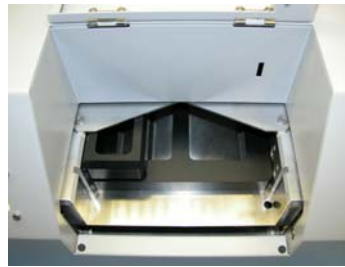


- (3) Close the access door and verify that the *READY* light is lit. Initiate the erase cycle by pressing and holding the *START Switch* until the *START* indicator illuminates. When the *START* indicator goes off, open the access door, remove the *Guide Block* and take out the HDD.

3-2 3.5-inch Half-Height (1-inch) HDD (HIGH-SECURITY Process)

NOTE: The HDD will be rendered inoperable and the data it contained will be magnetically destroyed by the standard process, but some magnetic patterns may remain due to the coercive properties of the HDD media. In applications that require the removal of ALL residual magnetic patterns, the following procedure should be employed:

- (1) Open the access door and set the *Base Frame* in the device tray. Position the *Side Guide* on the top left side of the *Base Frame*:



- (2) Position the HDD to the right of the *Side Guide* with the HDD's cover facing up (PCBA facing down):



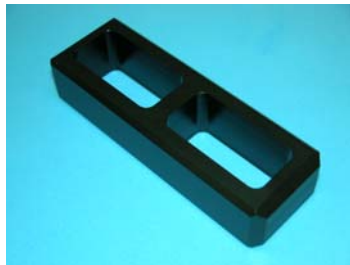
- (3) Install the *Guide Block*.
- (4) Close the access door and verify that the *READY* light is lit. Initiate the erase cycle by pressing and holding the *START Switch* until the *START* indicator illuminates. When the *START* indicator goes off, open the access door, remove the *Guide Block* and take out the HDD.
- (5) Move the *Side Guide* to the right side of the *Base Frame*, and reinstall the HDD:



- (6) Close the access door and verify that the *READY* light is lit. Install the *Guide Block* and start an erase cycle.
- (7) Remove the *Guide Block* and pull out the HDD while holding down the *Side Guide* and the *Base Frame*.

3-3 3.5-inch Full-Height (1.6-inch) HDD

- (1) Open the access door and set the *Side Guide* in the right side of the tray:



- (2) Position the HDD to the left of the *Side Guide* with the HDD's cover facing up (PCBA facing down) and the *HDD media towards the rear* of the drive tray. *Be careful mounting the HDD - data may not be completely erased if it is not oriented properly!*

- (3) Install the *Guide Block*:



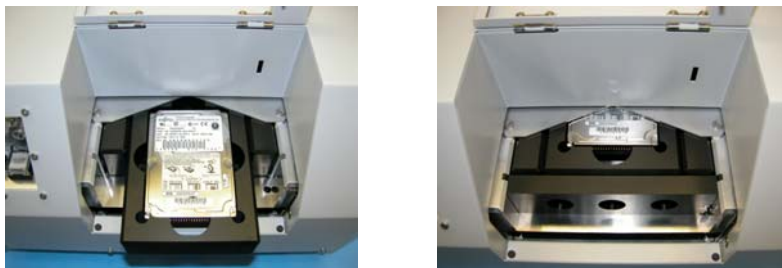
- (4) Close the access door and verify that the *READY* light is lit. Initiate the erase cycle by pressing and holding the *START* button until the *START* indicator illuminates. When the *START* indicator goes off, open the access door, remove the *Guide Block* and take out the HDD while holding the *Side Guide*.
- (5) Move the *Side Guide* to the left side of the tray, and place the HDD on the right.
- (6) Install the *Guide Block*, close the access door, and repeat the erase cycle.
- (7) Remove the *Guide Block* and take out the HDD.

3-4 2.5-inch (9.5 mm high) HDD

- (1) With the single cutout facing upwards, place the *Small HDD Attachment* in the *Base Attachment*. Place the *HDD Spacer* in the Small HDD Attachment's cutout:



- (2) Place the HDD in the cutout on top of the *HDD Spacer*.
- (3) Open the access door and place the assembly in the tray. Install the *Guide Block*:



- (4) Close the access door and verify that the *READY* light is lit. Initiate the erase cycle by pressing and holding the *START Switch* until the *START* indicator illuminates. When the *START* indicator goes off, open the access door, remove the *Guide Block* and the adapter assembly, and then take out the HDD.

3-5 2.5-inch (12.5 mm high) HDD

- (1) With the side with the single cutout facing upwards, place the *Small HDD Attachment* in the *Base Attachment*:



- (2) Position the HDD in the Small HDD Attachment's cutout.
- (3) Open the access door and place the assembly in the tray.

And then install the *Guide Block*:



- (4) Close the access door and verify that the *READY* light is lit. Initiate the erase cycle by pressing and holding the *START Switch* until the *START* indicator illuminates. When the *START* indicator goes off, open the access door, remove the *Guide Block* and the adapter assembly, and then take out the HDD.

3-6 1.8-inch HDD

- (1) With the side with the dual cutouts facing upwards, place the *Small HDD Attachment* in the *Base Attachment*. Place the HDD in the smaller of the two cutouts in the *Small HDD Attachment*.



- (2) Open the access door and place the assembly in the tray with the HDD positioned towards the rear of the tray.

Install the *Guide Block*:



- (3) Close the access door and verify that the *READY* light is lit. Initiate the erase cycle by pressing and holding the *START Switch* until the *START* indicator illuminates. When the *START* indicator goes off, open the access door, remove the *Guide Block* and the adapter assembly, and then take out the HDD.

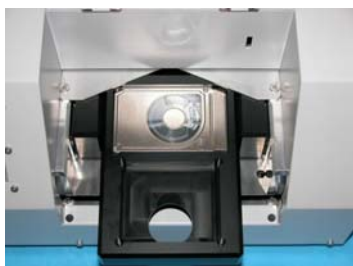
3-7 1.8-inch HDD (PC-Card Mounted)

- (1) With the side with the dual cutouts facing upwards, place the *Small HDD Attachment* in the *Base Attachment*. Place the HDD in the larger of the two cutouts in the Small HDD Attachment.



- (2) Open the access door and place the assembly in the tray with the HDD positioned towards the rear of the tray.

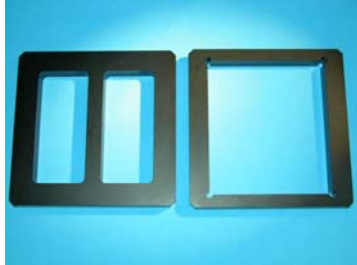
Install the *Guide Block*:



- (3) Close the access door and verify that the *READY* light is lit. Initiate the erase cycle by pressing and holding the *START Switch* until the *START* indicator illuminates. When the *START* indicator goes off, open the access door, remove the *Guide Block* and the adapter assembly, and then take out the HDD.

3-8 3480 / 3490 1/2-inch Tape Cartridge

(1) Open the access door and place the *Base Frame* in the device tray:



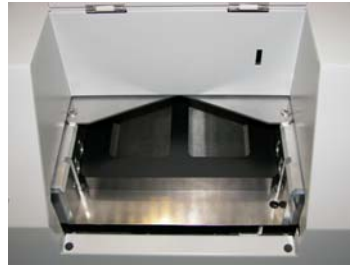
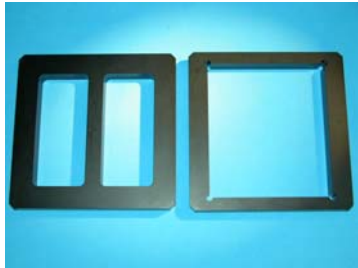
(2) Position the tape cartridge in the *Tape Attachment*, then place the frame and cartridge on the *Base Frame* in the device tray. Install the *Guide Block*:



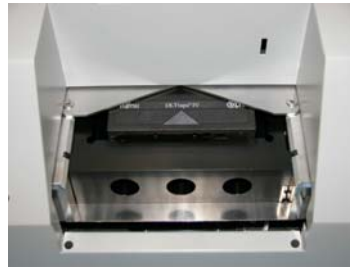
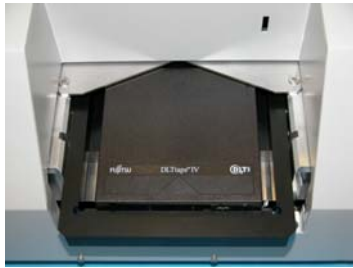
(3) Close the access door and verify that the *READY* light is lit. Initiate the erase cycle by pressing and holding the *START Switch* until the *START* indicator illuminates. When the *START* indicator goes off, open the access door and remove the *Guide Block*, then take out the *Tape Attachment* and tape cartridge.

3-9 DLT Tape

- (1) Open the access door and place the *Base Frame* in the device tray:



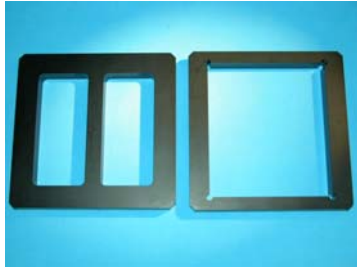
- (2) Position the tape in the *Tape Attachment*, then place the frame and tape on the *Base Frame* in the device tray. Install the *Guide Block*:



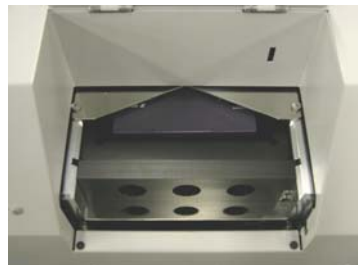
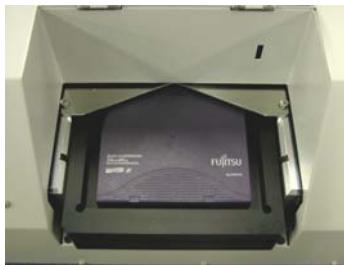
- (3) Close the access door and verify that the *READY* light is lit. Initiate the erase cycle by pressing and holding the *START Switch* until the *START* indicator illuminates. When the *START* indicator goes off, open the access door and remove the *Guide Block*, then take out the *Tape Attachment* and tape.

3-10 LTO Tape

- (1) Open the access door and place the *Base Frame* in the device tray:



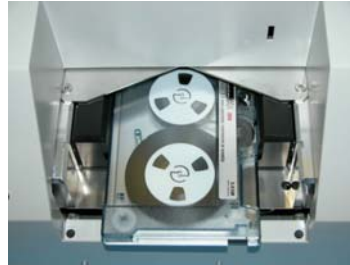
- (2) Position the tape in the *Tape Attachment*, then place the frame and tape on the *Base Frame* in the device tray. Install the *Guide Block*:



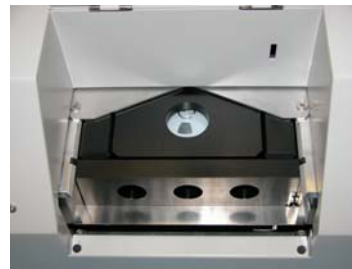
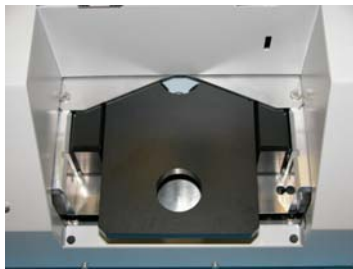
- (3) Close the access door and verify that the *READY* light is lit. Initiate the erase cycle by pressing and holding the *START Switch* until the *START* indicator illuminates. When the *START* indicator goes off, open the access door and remove the *Guide Block*, then take out the *Tape Attachment* and tape.

3-11 ¼-inch QIC Tape

- (1) Open the access door and place the *Base Attachment* in the device tray. Place the Tape in the Base Attachment's slot:



- (2) Position the *Tape Spacer* over the tape, then install the *Guide Block*:



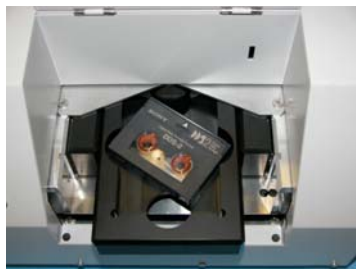
- (3) Close the access door and verify that the *READY* light is lit. Initiate the erase cycle by pressing and holding the *START Switch* until the *START* indicator illuminates. When the *START* indicator goes off, open the access door and remove the *Guide Block* and the *Tape Spacer*, then take out the tape while holding down the *Base Attachment*.

3-12 DAT (3.81mm Helical Scan) Tape

- (1) Open the access door and place the *Base Attachment* in the device tray:



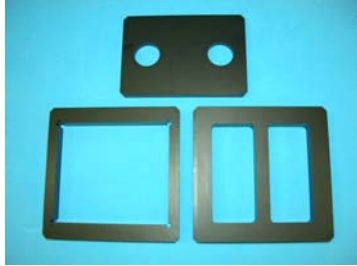
- (2) Align the tape diagonally with the indents in the *Small HDD Attachment*. Place the Small HDD Attachment in the slot in the Base Attachment. Install the *Guide Block*:



- (3) Close the access door and verify that the *READY* light is lit. Initiate the erase cycle by pressing and holding the *START Switch* until the *START* indicator illuminates.
- (4) When the *START* indicator goes off, open the access door and remove the *Guide Block*. Remove the tape while holding down the *Small HDD Attachment*.

3-13 8mm Helical Scan Tape

- (1) Open the access door and place the *Tape Attachment* in the device tray. Place the tape in the *Tape Attachment*:



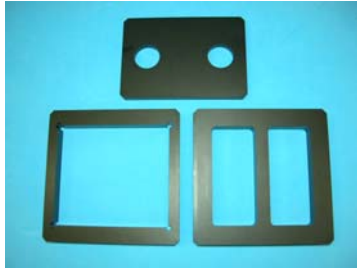
- (2) Place the *Base Frame* on top of the tape. Place the *Tape Spacer* on top of the *Base Frame*. Install the *Guide Block*:



- (3) Close the access door and verify that the *READY* light is lit. Initiate the erase cycle by pressing and holding the *START Switch* until the *START* indicator illuminates.
- (4) When the *START* indicator goes off, open the access door and remove the *Guide Block*. Remove the *Tape Spacer* then remove the tape while holding down the *Base Frame*.

3-14 TRAVAN NS Tape

- (1) Open the access door and place the *Tape Attachment* in the device tray. Place the tape in the *Tape Attachment*:



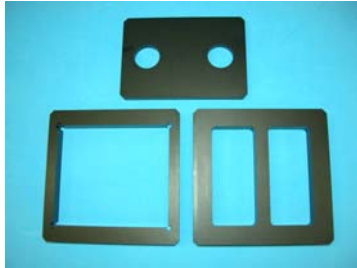
- (2) Place the *Base Frame* on top of the tape. Place the *Tape Spacer* on top of the *Base Frame*. Install the *Guide Block*:



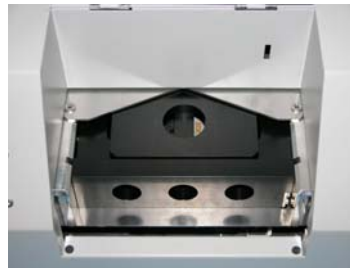
- (3) Close the access door and verify that the *READY* light is lit. Initiate the erase cycle by pressing and holding the *START Switch* until the *START* indicator illuminates.
- (4) When the *START* indicator goes off, open the access door and remove the *Guide Block*. Remove the *Tape Spacer* then remove the tape while holding down the *Base Frame*.

3-15 AIT

- (1) Open the access door and place the *Tape Attachment* in the device tray. Place the tape in the *Tape Attachment*:



- (2) Place the *Base Frame* on top of the tape. Place the *Tape Spacer* on top of the *Base Frame*. Install the *Guide Block*:



- (3) Close the access door and verify that the *READY* light is lit. Initiate the erase cycle by pressing and holding the *START Switch* until the *START* indicator illuminates. When the *START* indicator goes off, open the access door and remove the *Guide Block*. Remove the *Tape Spacer* and the *Base Frame* then remove the tape.

4 Specifications

Demagnetization method:	Erasure by permanent magnet
Cycle Time:	approx. 60 seconds
Internal Field Strength:	5,000 Gauss (<i>min</i>) - 13,000 Gauss (<i>max</i>)
External Field Strength:	100 Gauss (max.)

Supported devices

Hard Disk Drives:

- (1) 3.5" HDD (1" height / 1.6" height)
- (2) 2.5" HDD (12.5 mm height / 9.5 mm height)
- (3) 1.8" HDD (AT/PC card)

Magnetic tape:

- (1) ½ inch tape (Type 3480)
- (2) DLT tape
- (3) LTO tape
- (4) 1/4-inch tape (QIC tape)
- (5) DAT tape
- (6) 8mm helical tape
- (7) TRAVAN NS tape
- (8) AIT tape

Operating temperature range:	-10 to 40° C
Operating humidity range:	10 to 85% RH
Weight:	approx. 33 Kg
Dimensions:	340 mm (W) X 605 mm (D) X 215 mm (H)

These specifications may change without prior notice.

5 Supplied Accessories

(1) Guide Block Assy	ZB100-0510-V0005
(2) Base Attachment	ZB100-0510-X0030
(3) Small HDD Attachment	ZB100-0510-X0033
(4) Base Frame	ZB100-0510-X0031
(5) Tape Attachment	ZB100-0510-X0050
(6) Side Guide	ZB100-0510-X0032
(7) Tape Spacer	ZB100-0510-X0049
(8) HDD Spacer	ZB100-0510-X0034
(9) AC Power Cord	UL3P-W-2
(10) "ERASED" Labels (3000 pcs.)	ZB100-0520-X0002

6 Optional Accessories

(1) Carrying Case	ZB100-0510-T0004
-------------------	------------------

7 Consumables

(1) Erased label, ZB100-0520-X0002

7 Limited Warranty

- (1) You are entitled to warranty service according to the terms and conditions of this limited warranty if repair to your SEM Mag EraSURE™ Professional hardware is required within the limited warranty period. Costs for returning the products shall be borne by the customer. In addition, SEM assumes no responsibility whatsoever for any losses or damages to personal computers, other peripheral equipment, software, or data that might be attributable to the failure of the SEM Mag EraSURE™ Professional or other factors.
- (2) SEM assumes no responsibility whatsoever for damages or losses, either direct or otherwise, caused by the failure of this equipment or the use of this equipment.
- (3) Repairs shall be charged for, even if the equipment is returned during the warranty period, under the following circumstances:
 - The warranty is lost or is not provided.
 - The purchase date, or serial number are not written on the warranty, or if the information on the warranty has been altered.
 - The damage or defect is a result of improper storage, the equipment being hit or dropped during transport, or other improper handling by the customer.
 - The damage or defect is a result of improper use, or modification or servicing by someone other than an authorized repair location.
 - The damage or defect is a result of fire, salt damage, gas damage, earthquake, lightning, wind and flood damage, other natural disasters, or if the damage is caused by abnormal voltages and other external factors.
- (4) Any modification or dismantling of the equipment voids the warranty.
- (5) This warranty cannot be replaced, so keep it in a safe, secure place.

ZB100—0520—00007E Rev.01

Warranty

Required information: Warranty is void without the Serial No., Address and Name of the purchaser, and the Purchase Date.

- This warranty covers repair of the equipment at no cost subject to the terms and conditions stated in the limited warranty.
- If the equipment is defective or damaged during the warranty period, take the equipment to an authorized repair location together with this warranty.

Product and model No: Mag EraSURE Professional /ZB100—0520—00001
<input type="checkbox"/> Serial No. (S/N):
Warranty period is 1 year from the date of purchase.
<input type="checkbox"/> Address:
Telephone No: - -
<input type="checkbox"/> Name:
<input type="checkbox"/> Date of purchase: